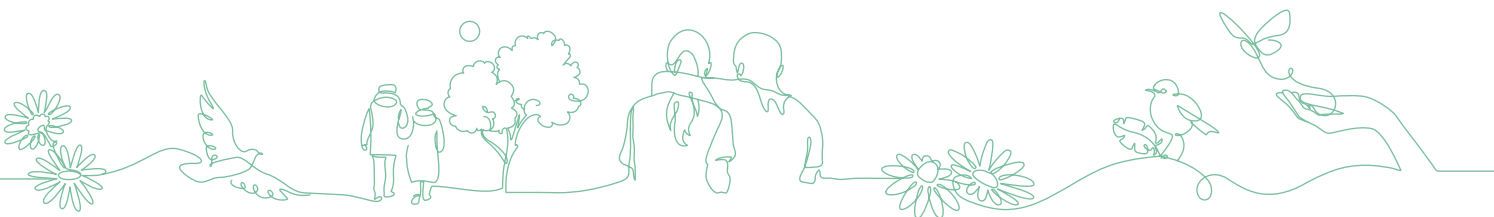




VALE SAFE SHADE

The Vale Vision Blind has been specifically designed to meet the needs of mental health hospitals, combining functionality and safety to deliver a superior solution for light-sensitive patients.



VALE SAFE SHADE

The Vale Safe Shade offers a safe and innovative solution for managing light levels in mental health environments.

Designed with care and precision, this Venetian-style blind provides enhanced control over light exposure while addressing safety concerns typically associated with conventional blinds, such as ligature and attack risks.

The Vale Vision Blind has been specifically designed to meet the needs of mental health hospitals, combining functionality and safety to deliver a superior solution for light-sensitive patients. By providing precise light control and a secure design, this product helps foster a calming, therapeutic environment that supports recovery and wellbeing.

Contact us today to see how we can help with your project, for a quote or for any further information.

Contact us

Email: info@valsecure.co.uk | Tel: 01949 280029
Unit 4D, East Bridgford Business Park, NG13 8PJ

KEY PRODUCT FEATURES OF THE VALE SAFE SHADE:

● Advanced light control

The Venetian-style design allows for precise adjustment of light levels, enabling patients and staff to create a comfortable and therapeutic environment tailored to individual needs.

● Safety-first design

Fully encased behind our attack-resistant glazing, the Vale Vision Blind eliminates access to moving parts, ensuring safety in even the most challenging settings.

● Seamless integration

This blind can be installed into any of our window systems and is compatible with both double and triple glazing configurations, offering flexibility to suit various facility designs.

● Intuitive operation

Choose from wall-mounted or remote controls for easy and convenient operation. A nurse base override control ensures staff can maintain full control when required, prioritizing safety and patient care.

